

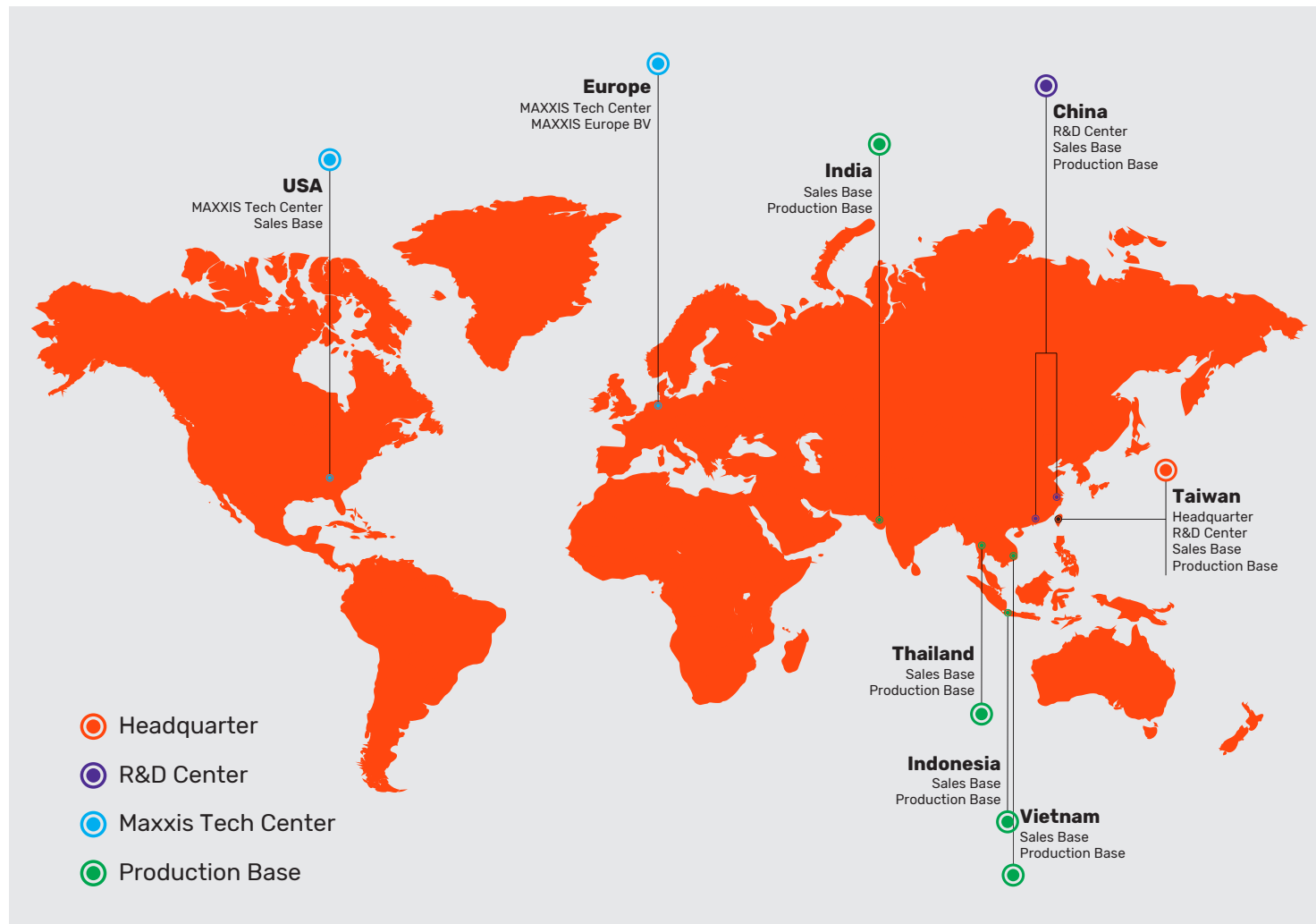


 **MAXXIS**
<https://www.maxxis.com/int/>



 **MAXXIS**

2025-2026 MOTORCYCLE CATALOGUE



AT MAXXIS we strive to provide the highest quality products and customer service with the goal of creating lifelong Maxxis customers. Anchored by a strong commitment to our values, we form close partnerships with our stakeholders, and together we work to consistently exceed our customers' expectations.

From design to production, from the factory floor to your favorite road or trail, Maxxis products lead the way in technological advances. For bicycle, automotive, light truck, ATV, motorcycle, kart, trailer and lawn & garden, Maxxis provides the quality customers have come to depend on.

Total customer satisfaction has been Maxxis' guiding purpose since 1967. Working toward this goal has built Maxxis into the successful worldwide company it is today. Champions around the world choose Maxxis because they know that our extensive product research, unique designs and rigorous testing standards produce tires that will elevate riders to the next level.

For more information on the entire Maxxis product line, visit us at <http://international.maxxis.com/>

MAXXIS TIRE SAFETY



- Consult your owner's manual for specific tire information.
- Clearance around tires must be maintained. Check with the motorcycle manufacturer before attempting to mount tire sizes which differ from those stated in the owner's manual. Altering the tire size may require a different rim size. For this reason, we suggest you consult your dealer to be sure the rim size is compatible before making any changes to the tire size on your vehicle. Be sure adequate clearance is maintained at all times.
- When replacing tube-type tires, be sure to replace the inner tubes. Stretched inner tubes can crease and fail due to thinning of the inner tube rubber. Make sure inner tube size matches the tire size. Consult your motorcycle dealer for correct rim band replacement.
- The air pressure inside the tire is critical to its handling characteristics and load capability. Check cold tire pressure with an accurate tire pressure gauge before every ride. Tire pressure should not be adjusted immediately after a tire has been in use.
- Follow tire pressure guidelines located in your vehicle's owner's manual. Never exceed maximum inflation pressure indicated on your tire's sidewall.
- Check valve cores. Tighten for correct seating. If valve cores are damaged, replace them.
- Check tires for damage before and after riding. Punctured, cracked, bulging or blistered tires should be replaced immediately. If not replaced, damage can result, including sudden and complete tire failure.
- After replacing worn tires, take time to become acquainted with the handling and performance of your new tires. Check inflation pressure frequently and adjust if needed.
- Tire mounting and dismounting should be handled by professionals. Improper mounting or incorrectly mounted tires can lead to damage to the tire, wheel and/or vehicle and injury or death.
- Tire and wheel assemblies should be balanced before use and each time the tire is removed or replaced. Failure to do so will result in accelerated tread wear.
- Check for broken or damaged spokes and replace as necessary.
- Tires marked as front or rear tires should only be used in their designated position.
- Do not retread, regroove, sipe or otherwise modify tires.
- Do not use dry or liquid balancers. Do not use liquid sealants.
- Do not store tires in direct sunlight for extended periods of time. Store unmounted tires indoors at temperatures above 32°F.
- Allowing tires to stand in oil or gasoline may have an adverse affect on the rubber compounds of the tire.
- Do not mix radial and bias construction tires unless specifically recommended by the manufacturer as the original equipment of the vehicle.
- Never chemically treat tires (i.e. "soaking" or using tire softener in an attempt to alter tire compound).
- Never operate a vehicle beyond the speed rating denoted on the sidewall of the tires. Do not exceed the load rating denoted on the tire sidewall. These situations can cause tire damage, possibly resulting in catastrophic tire failure.
- Wheel alignment is critical to tread life and tire safety. Replace bent or damaged rims or wheels immediately.
- Failure to follow these guidelines can result in accelerated tread wear and may cause catastrophic tire failure. This may result in accident, injury, or death.

CONTENTS

Motorcycle
On-Road



NEW
SUPERMAXX RACESLICK ▶ 06



NEW
SUPERMAXX RACE ▶ 07

Racing



NEW
SUPERMAXX HS ▶ 08



SUPERMAXX SPORT ▶ 09

On-Road Radial



NEW
SUPERMAXX ST3 ▶ 10



NEW
PROMAXX SPORT ▶ 11

On-Road Bias



PROMAXX ▶ 12



TOURING / CLASSIC ▶ 13

Cruiser

Motorcycle
On/Off-Road



MAXXVENTURE ▶ 15



NEW
MAXXVENTURE AT ▶ 16



NEW
MAXXVENTURE XTR ▶ 17



NEW
MAXXVENTURE MT ▶ 18

Adventure

Motorcycle
Off-Road



MAXXCROSS MX-SM ▶ 20



MAXXCROSS MX-ST+ ▶ 20



NEW
MAXXCROSS MX-MH ▶ 21



MAXXCROSS MX-SI ▶ 22



MAXXCROSS MX-IH ▶ 22

Motocross



MAXXCROSS SI ▶ 23



MAXXCROSS IT ▶ 23



MAXXCROSS Desert IT ▶ 24



NEW
MAXXENDURO ▶ 26-27

Enduro



DTR-1 ▶ 28

Dirt Track Racing



TRIALMAXX ▶ 28

Trial

Scooter



NEW
MA-XR1 ▶ 30

Race



S98 PLUS ▶ 31



SUPERMAXX SC ▶ 32



NEW
MA-WG2 ▶ 33



S98 SPORT ▶ 34

Sport



MA-R1N ▶ 34



NEW
MA-MBA ▶ 35

Urban



NEW
MA-CT1 ▶ 36



CS-V6 ▶ 37

Standard



MA-3D ▶ 37

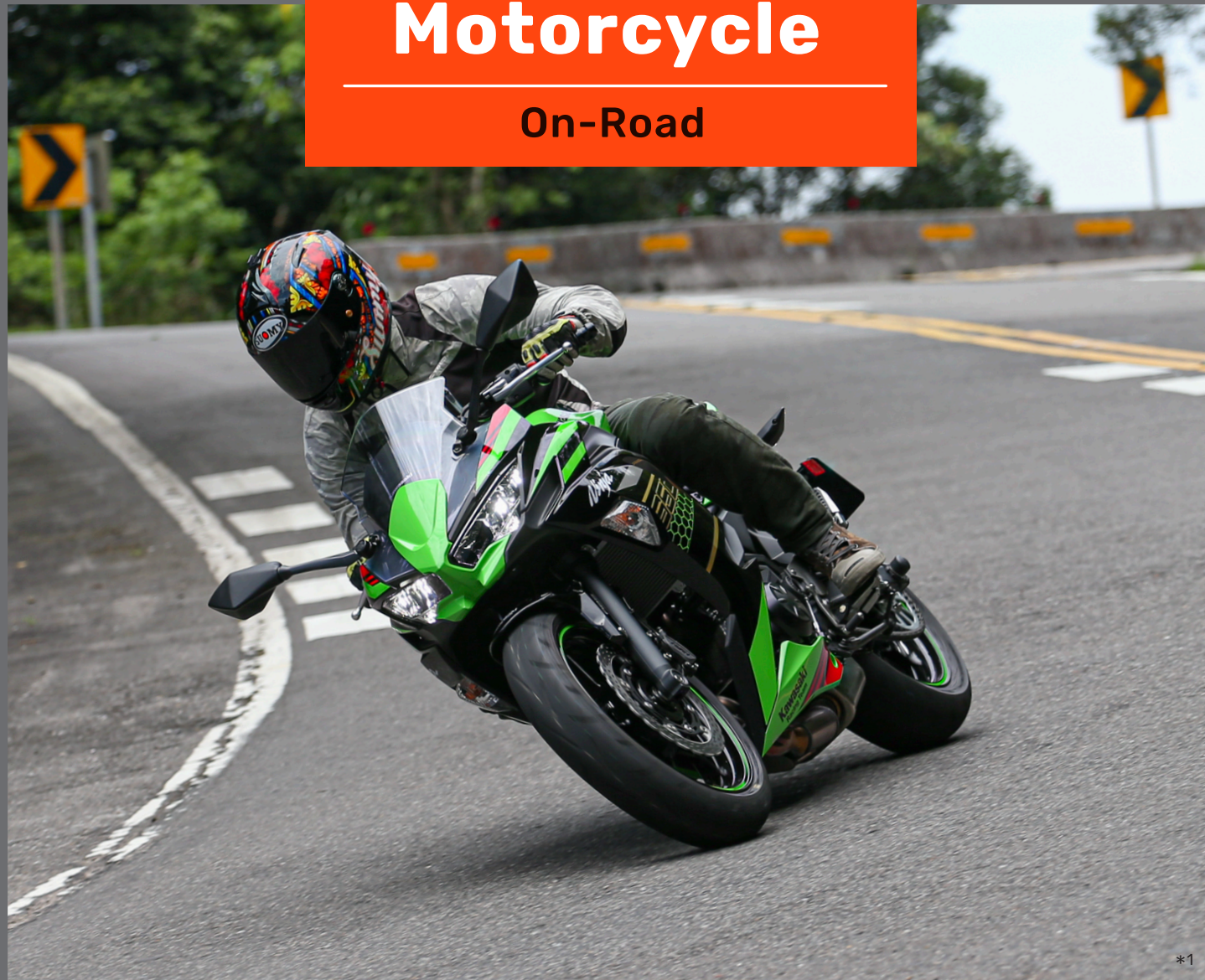


MA-EV ▶ 38

Electric Vehicle

Motorcycle

On-Road



*1

Motorcycle On-Road

MODEL	Urban	Road	Track	Competition
Racing				
SUPERMAXX RACE SLICK				
SUPERMAXX RACE				
On-Road Radial				
SUPERMAXX HS				
SUPERMAXX SPORT				
SUPERMAXX ST3				
On-Road Bias				
PROMAXX SPORT				
PROMAXX				
Cruiser				
TOURING / CLASSIC				

Racing

6

SLICK SUPERMAXX RACE

MA-RS

- Track-designed tires with excellent grip and outstanding balance, further enhancing performance in handling and cornering stability.
- New compound make improve excellent grip performance.



TIRE SIZE	LOAD/SPEED RATING	OVERALL DIAMETER (INCH)	SECTION WIDTH (INCH)	RIM SIZE (INCH)	TREAD DEPTH (INCH)
MA-RS Front					
100/70R17	49H/TL	22.83	3.70	2.75X17	3/32
110/70R17	54H/TL	23.22	4.09	3.00X17	4/32
MA-RS Rear					
120/70R17	58W/TL	23.77	4.68	3.50X17	5/32
140/70R17	66H/TL	24.72	5.39	3.75X17	5/32
150/60R17	66H/TL	24.13	5.94	4.25X17	5/32



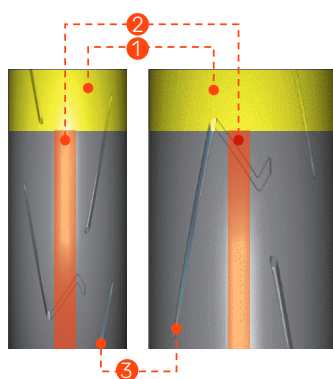
*1



SUPERMAXX RACE MA-RACE

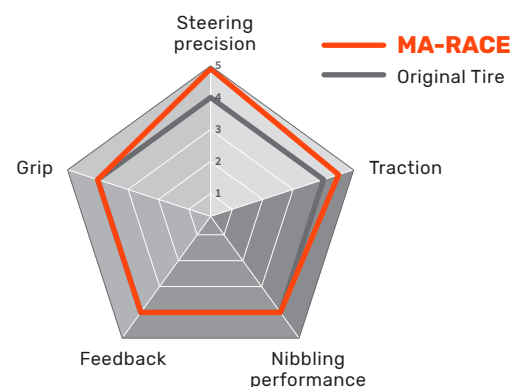
- Track tyre profiles for agile maneuverability in the heat of the race.
- New compound make improve excellent grip performance.
- Enhanced structure to improve support and high-speed stability.

Technical Feature



- High-land ratio design of pattern**
-Improve grip and handling.
- Lower sea-land ratio at center part**
-Improve hi-speed stability.
-Reduce wear and extend life span.
- Tread tapering structure design**
-improve tire rigidity.
-improve manipulation stability.
-less heat decay.

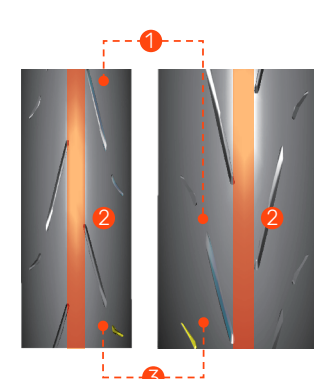
Test Result



SUPERMAXX HS MA-HS

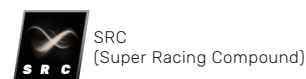
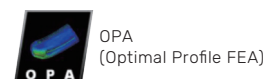
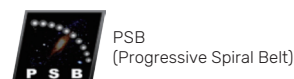
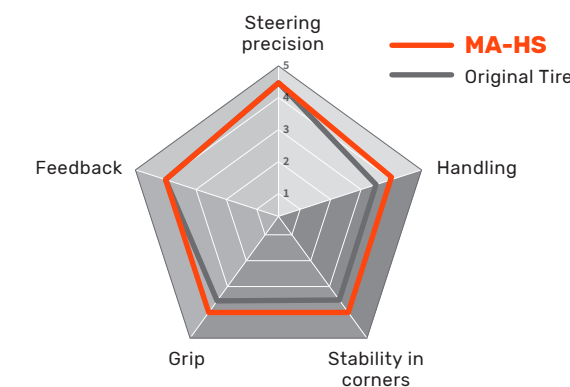
- Mono-spiral steel breaker design improve tire stiffness, provides precise cornering behavior and extraordinary handling stability.
- New carbon compound makes excellent dry grip.
- Enhanced structure maintain straight-line driving stability and improves tilting stability.
- Enlarge the ground contact area to increase grip and cornering stability

Technical Feature

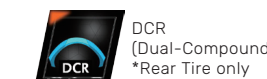


- Short groove design at the shoulder**
-Accelerate heat dissipation.
- Lower sea-land ratio at center part**
-Provide confidently high-speed stability and mileage when straight riding.
- Linear speed sense design**
-Good average abrasion and improved cornering rigidity.

Test Result



TIRE SIZE	LOAD/SPEED RATING	OVERALL DIAMETER (INCH)	SECTION WIDTH (INCH)	RIM SIZE (INCH)	TREAD DEPTH (INCH)
MA-SLICK Front					
100/80R17	52S/TL	23.26	3.97	2.50X17	4/32
110/70R17	54H/TL	23.22	4.33	3.00X17	4/32
MA-SLICK Rear					
130/70R17	62S/TL	24.37	5.11	3.50X17	6/32
140/70R17	66H/TL	24.37	5.55	3.75X17	6/32



TIRE SIZE	LOAD/SPEED RATING	OVERALL DIAMETER (INCH)	SECTION WIDTH (INCH)	RIM SIZE (INCH)	TREAD DEPTH (INCH)
MA-HS Front					
110/70R17	54H/TL	23.07	4.33	3.00X17	4/32
120/70ZR17	(58W)/TL	23.66	4.80	3.50X17	4/32
MA-HS Rear					
140/70R17	66H/TL	24.72	5.47	3.75X17	6/32
150/60R17	66H/TL	24.13	5.55	4.25X17	6/32
160/60ZR17	(69W)/TL	24.64	6.33	4.50X17	6/32
180/55ZR17	73W/TL	24.96	7.00	5.50X17	6/32
190/55ZR17	75W/TL	25.47	7.32	6.00X17	6/32



SUPERMAXX SPORT

MA-SP

- Mono-spiral steel breaker design improves tire stiffness, provides precise cornering behavior and extraordinary handling stability.
- Full-silica high-grip compound and enhanced structure make excellent dry and wet grip.
- New generation compound design provides high mileage, straight stability, extremely grip and traction at the same time.
- Low sea ratio design enhances contact patch and provides excellent grip performance.

TIRE SIZE	LOAD/SPEED RATING	OVERALL DIAMETER (INCH)	SECTION WIDTH (INCH)	RIM SIZE (INCH)	TREAD DEPTH (INCH)
MA-SP Front					
110/70R17	54H/TL	23.22	4.33	3.00X17	5/32
120/70ZR17	(58W)/TL	23.70	4.76	3.50X17	6/32
MA-SP Rear					
140/70R17	66H/TL	24.76	5.43	3.75X17	7/32
150/60R17	66H/TL	24.29	5.90	4.25X17	7/32
160/60ZR17	(69W)/TL	24.60	6.33	4.50X17	8/32
180/55ZR17	(73W)/TL	25.03	7.08	5.50X17	8/32
190/55ZR17	(75W)/TL	25.55	7.48	6.00X17	8/32
200/55ZR17	(78W)/TL	25.62	7.79	6.25X17	8/32



*1

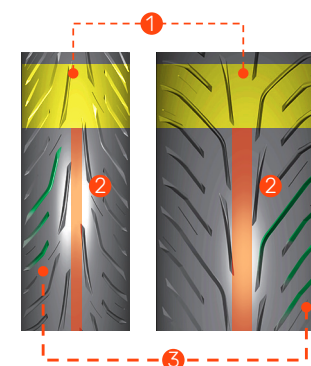


SUPERMAXX ST3

MA-ST3

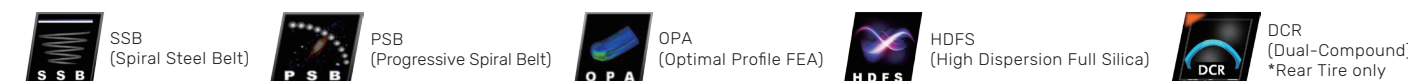
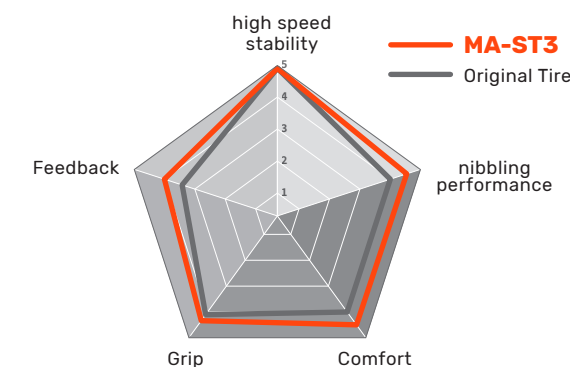
- Mono-spiral steel breaker design improve tire stiffness, provides precise cornering behavior and extraordinary handling stability.
- New silica high-grip compound and enhanced structure makes excellent dry and wet grip.
- New generation dual-compound design provides high mileage, straight stability, extremely grip and traction at the same time.
- Symmetrical parallel design with pattern-Good average wear and Improved high-speed stability in corner

Technical Feature



- 1 High sea-land ratio**
-High drainage efficiency.
-Balanced stability and handling.
- 2 Lower sea-land ratio at center part**
-Provide confidently high-speed stability and mileage when straight riding.
- 3 Symmetrical parallel design with pattern**
-Good average wear and Improved high-speed stability in corner.

Test Result



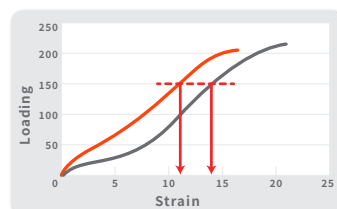
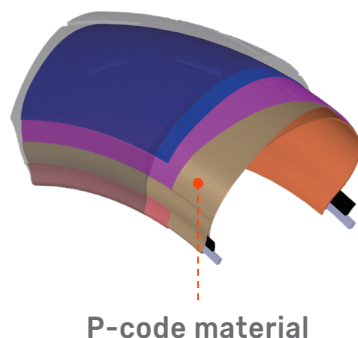
TIRE SIZE	LOAD/SPEED RATING	OVERALL DIAMETER (INCH)	SECTION WIDTH (INCH)	RIM SIZE (INCH)	TREAD DEPTH (INCH)
MA-ST3 Front					
120/70ZR17	(58W)/TL	23.62	4.76	3.50X17	6/32
MA-ST3 Rear					
160/60ZR17	(69W)/TL	24.60	6.29	4.50X17	9/32
180/55ZR17	(73W)/TL	24.72	7.08	5.50X17	9/32
190/55ZR17	(75W)/TL	25.35	7.48	6.00X17	9/32



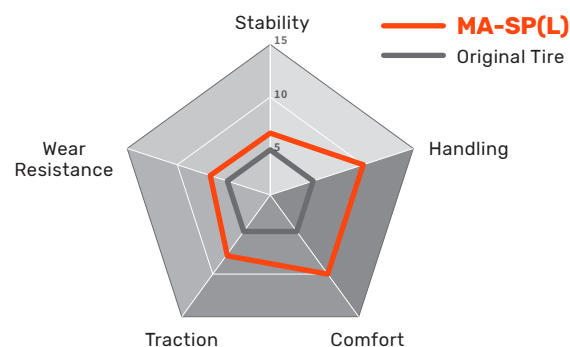
PROMAXX SPORT MA-SP(L)

- To achieve three requirements : Wear mileage , handling and grip.
- Keep a pattern ratio between shoulder and tread having better grip stable during cornering and handling.
- New Semi Silica recipe get the gripping ability of the compound and the ground has been greatly improved.
- Strengthening the carcass structure, radial stiffness gets more 15% and lateral stiffness also get more 40%.

Technical Feature



Test Result



TIRE SIZE	LOAD/SPEED RATING	OVERALL DIAMETER (INCH)	SECTION WIDTH (INCH)	RIM SIZE (INCH)	TREAD DEPTH (INCH)
MA-SP(L) Front					
110/70-17	54S/TL	23.15	4.33	3.00X17	6/32
90/80-17	46S/TL	22.80	3.54	2.15X17	6/32
100/80-17	52S/TL	23.39	3.98	2.50X17	5/32
MA-SP(L) Rear					
140/70-17	66S/TL	24.96	5.51	3.75X17	8/32
150/60-17	66S/TL	24.02	6.02	4.25X17	8/32
140/70-17	66S/TL	24.96	5.51	3.75X17	8/32



PROMAXX M6102 / M6103

- The central grooves of front tire keep the way on straight line.
- Advanced sharp main groove help water dispersion and contact patch that add safety.
- Directional treads pattern mate to superior tread compound that deliver excellent wet grip both on straight line and cornering.
- New generation H-rated street tire.

TIRE SIZE	LOAD/SPEED RATING	OVERALL DIAMETER (INCH)	SECTION WIDTH (INCH)	RIM SIZE (INCH)	TREAD DEPTH (INCH)
M6102 Front					
110/80-12	61L/TL	19.17	4.29	2.50X12	6/32
120/70-12	51L/TL	18.62	4.72	3.50X12	6/32
110/70-17	54H/TL	23.07	4.33	3.00X17	6/32
110/80-17	57H/TL	23.94	4.29	2.50X17	6/32
110/80-17	57H/TT	24.17	4.29	2.50X17	6/32
90/90-18	51H/TL	24.44	3.66	2.15X18	6/32
100/90-18	56H/TL	25.19	4.09	2.50X18	6/32
100/90-19	57H/TL	26.29	4.05	2.50X19	6/32
3.00-21	51H/TL	27.68	3.23	1.85X21	6/32
M6103 Rear					
100/90-10	56L/TL	17.28	4.02	2.50X10	7/32
130/70-12	56L/TL	19.17	5.08	3.50X12	8/32
130/90-15	66H/TL	24.21	5.11	3.00X15	9/32
130/90-15	66P/TT	24.21	5.11	3.00X15	9/32
140/90-15	70H/TL	24.92	5.82	3.00X15	9/32
130/90-16	67H/TL	25.19	5.11	3.00X16	9/32
130/70-17	62H/TL	24.17	5.08	3.50X17	9/32
130/70-17	62H/TT	24.17	5.08	3.50X17	9/32
130/90-17	68H/TL	26.29	5.11	3.00X17	9/32
140/70-17	66H/TL	24.72	5.35	3.50X17	8/32
150/70-17	69H/TL	25.28	5.87	4.00X17	9/32
110/90-18	61H/TL	25.79	4.29	2.50X18	9/32
120/90-18	65H/TL	26.65	4.88	2.75X18	9/32



TOURING / *Classic*

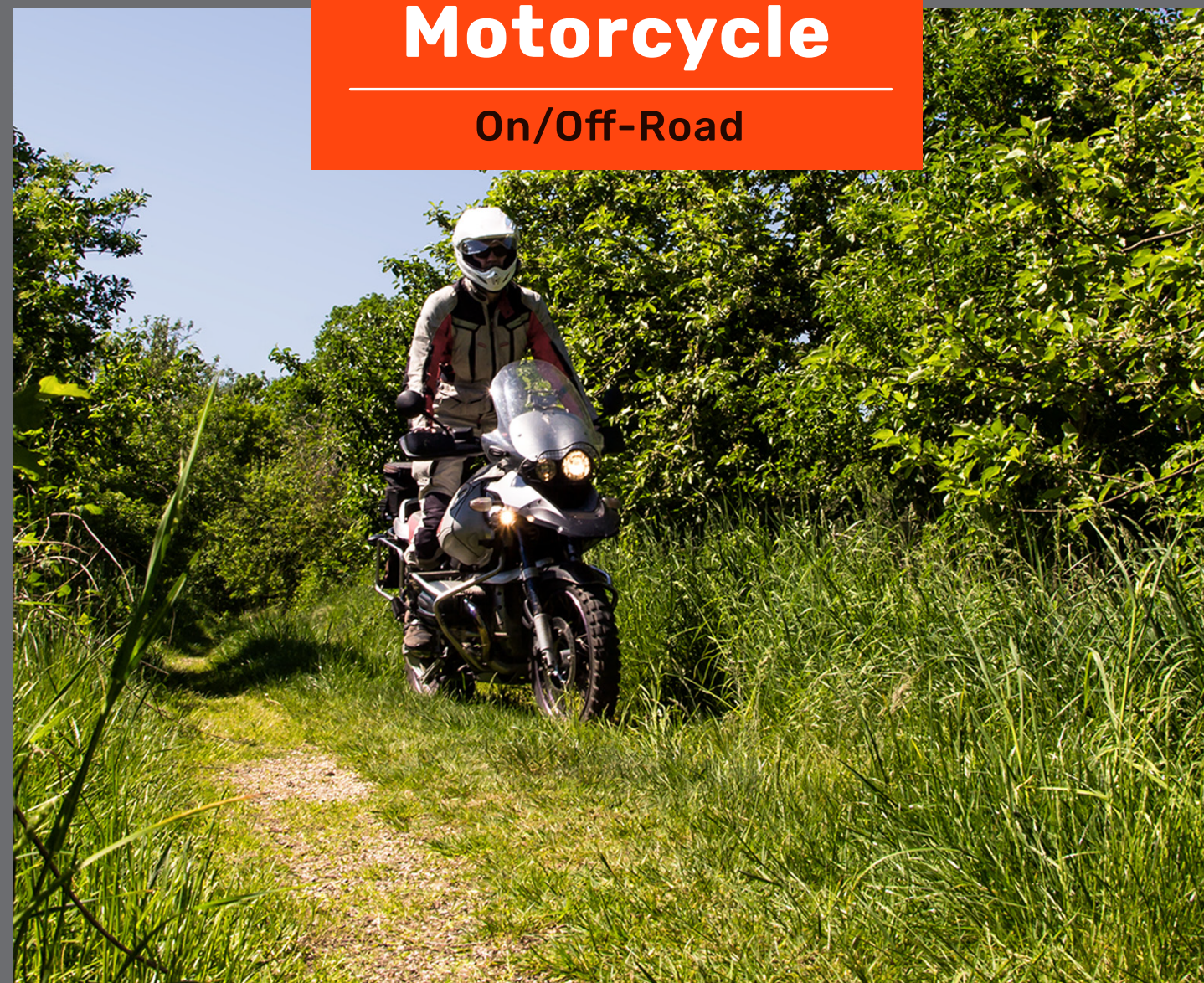
M6011F / M6011R

- The specially formulated and matched front/rear tread pattern provides excellent traction and durability in wet weather.
- Deep offset tread grooves channel water away from the contact patch.
- Additional stability is provided by the offset center rib, which resists tracking over highway rain grooves and steel grated bridges.

TIRE SIZE	LOAD/SPEED RATING	OVERALL DIAMETER (INCH)	SECTION WIDTH (INCH)	RIM SIZE (INCH)	TREAD DEPTH (INCH)
Touring Front					
130/70-18	63H/TL	25.20	5.10	3.50X18	6/32
Touring Rear					
160/80-16	75H/TL	26.00	6.30	4.00X16	11/32
CLASSIC Front					
150/80-16	71H/TL	25.51	5.98	3.50X16	6/32
130/90-16	67H/TL	25.00	5.19	3.00X16	7/32
120/80-17	61S/TL	24.57	4.69	2.75x17	7/32
120/90-18	65H/TL	26.69	4.96	2.75x18	7/32
90/90-19	52H/TL	25.75	3.54	2.15x19	7/32
100/90-19	57H/TL	26.46	3.94	2.50x19	7/32
110/90-19	62H/TL	26.85	4.45	2.50x19	7/32
80/90-21	48H/TL	26.81	3.15	1.85x21	6/32
CLASSIC Rear					
150/80-15	70H/TL	24.57	5.94	3.50X15	9/32
150/90-15	74H/TL	26.10	6.02	3.50X15	9/32
170/80-15	77H/TL	26.26	7.09	4.00X15	10/32
140/90-16	77H/L	25.51	5.83	3.50X16	9/32
130/90-16	67H/TL	25.00	5.19	3.00X16	7/32
150/80-16	71H/TL	25.51	5.98	3.50X16	6/32
130/70-18	63H/TL	25.20	5.10	3.50X18	6/32

Motorcycle

On/Off-Road



Motorcycle On/Off-Road

MODEL	Off-Road	Road
Adventue		
MAXXVENTURE		
MAXXVENTURE AT		
MAXXVENTURE XTR		
MAXXVENTURE MT		

MAXXVENTURE

MA-ADV



- Large tread blocks with wide grooves provide excellent water dispersion and wet traction.
- Excellent combination of tire construction and tread design provide super straight-line handling and stability.
- Optimized pattern design around shoulder area creates large contact patch for superior cornering and smooth turning transition.
- Full-silica high-grip compound and enhanced structure make excellent dry and wet grip.

TIRE SIZE	LOAD/SPEED RATING	OVERALL DIAMETER (INCH)	SECTION WIDTH (INCH)	RIM SIZE (INCH)	TREAD DEPTH (INCH)
MA-ADV Front					
110/80R19	59V/TL	26.06	4.29	2.50X19	6/32
120/70ZR17	60W/TL	25.70	4.84	3.50X19	6/32
120/70ZR19	(58W)/TL	23.66	4.68	3.50X17	6/32
MA-ADV Rear					
150/70R17	69V/TL	25.43	5.94	4.25X17	11/32
160/60ZR17	(69W)/TL	24.68	6.25	4.50X17	9/32
170/60ZR17	72W/TL	25.19	6.53	4.50X17	11/32
180/55ZR17	(73W)/TL	24.96	6.96	5.50X17	8/32

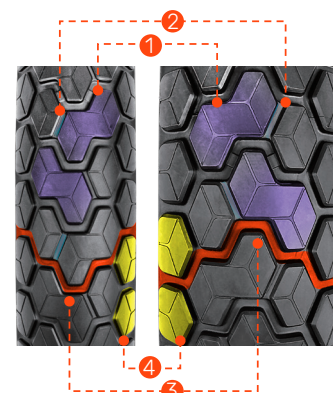


MAXXVENTURE AT

MA-AT

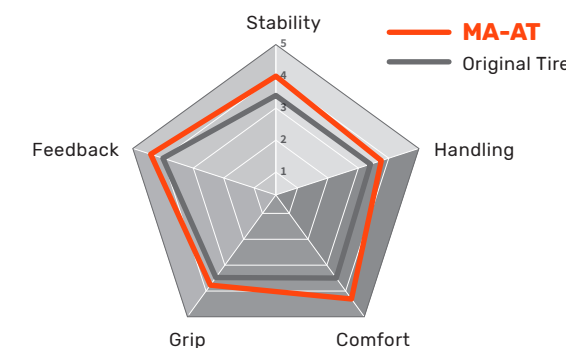
- Suitable for 70% good roads / 30% rough roads, multi-purpose surfaces.
- Higher sea ratio design to provides excellent drainage and wet grip performance.
- Cross-pattern design enhances tire traction.
- Central block pattern design enhances straight-line stability.

Technical Feature



- Central block pattern design**
-Enhances straight-line stability.
- Bridge-type design**
-Increases tread block strength
- Cross-groove design**
-Enhances tire traction.
- Pentagonal block pattern design on the tire shoulder.**
-Enhances tire drainage and sand expulsion

Test Result



SSB (Spiral Steel Belt)



PSB (Progressive Spiral Belt)



OPA (Optimal Profile FEA)



HDFS (High Dispersion Full Silica)

TIRE SIZE	LOAD/SPEED RATING	OVERALL DIAMETER (INCH)	SECTION WIDTH (INCH)	RIM SIZE (INCH)	TREAD DEPTH (INCH)
MA-AT Front					
90/90-21	54H/TL	-	-	2.15X21	-
110/80R19	59V/TL	-	-	2.50X19	-
120/70R19	72V/TL	-	-	3.50X17	-
MA-AT Rear					
150/70R17	69V/TL	-	-	4.25X17	-
150/70R18	70V/TL	-	-	4.25X18	-
170/60R17	72V/TL	-	-	4.50X17	-



MAXXVENTURE XTR MA-XTR

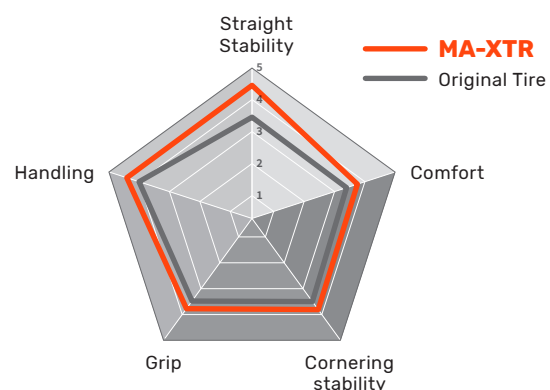
- New 60/40 ADV with directional noise reduction multi-tread pitch arrangement.
- The rear combine with step structure behind central knobs and new ADV compound increase stability.

Technical Feature



- 1 Well-design step structure enhance tread rigidity which increase stability.
- 2 Multi-tread pitch arrangement reduce rolling noise .

Test Result



TIRE SIZE	LOAD/SPEED RATING	OVERALL DIAMETER (INCH)	SECTION WIDTH (INCH)	RIM SIZE (INCH)	TREAD DEPTH (INCH)
MA-XTR Front					
• 110/80R19	59T/TL	-	-	-	-
• 120/70R19	60T/TL	-	-	-	-
• 90/90-21	54Q/TL	-	-	-	-
MA-XTR Rear					
• 150/70R17	69Q/TL	-	-	-	-
• 170/60R17	72T/TL	-	-	-	-
• 140/80-18	70Q/TL	-	-	-	-
• 150/70R18	70T/TL	-	-	-	-

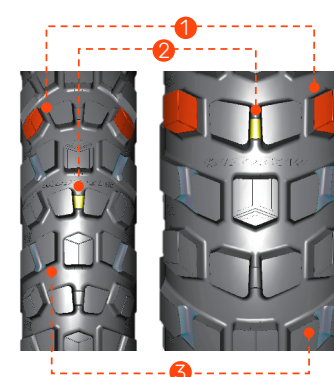
*Coming soon



MAXXVENTURE MT MA-MT

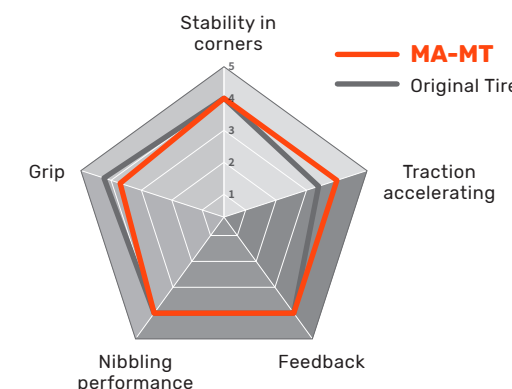
- Suitable for 50% on-road / 50% off-road diversified terrain °
- Higher sea ratio design to provides excellent drainage and wet grip performance °
- The tread groove bottom bridge design to improves the stiffness of the tread and the driving stability °
- Improve the carcass support and maintain high load stability °

Technical Feature



- 1 **Cubic Patten Design**
-Not easy to adhere to soil.
- 2 **Patterned groove reinforced design**
-Improve the stiffness of the tire shoulder pattern.
-Optimized ride stability.
- 3 **Tapering design at the shoulders**
-Improve tire drainage and sand drainage.

Test Result



SSB (Spiral Steel Belt)



PSB (Progressive Spiral Belt)



OPA (Optimal Profile FEA)



HDFS (High Dispersion Full Silica)

TIRE SIZE	LOAD/SPEED RATING	OVERALL DIAMETER (INCH)	SECTION WIDTH (INCH)	RIM SIZE (INCH)	TREAD DEPTH (INCH)
MA-MT Front					
90/90-21	54R/TL	-	-	2.15X21	-
120/70R19	60R/TL	25.70	4.76	3.50X19	11/32
MA-MT Rear					
150/70R18	70R/TL	26.45	5.90	4.25X18	14/32
170/60R17	72R/TL	25.23	6.49	4.50X17	14/32

Motorcycle

Off-Road Motocross



Motorcycle Off-Road Motocross

MODEL	Sand / Mud	Clay / Mud	Semi-Hard	Loose over Hard	Blue groove
Motocross competition					
MAXXCROSS MX-SM	██████████				
MAXXCROSS MX-ST ⁺ (Fr)	████████████████████				
MAXXCROSS MX-ST ⁺ (Rr)		████████████████████			
MAXXCROSS MX-MH			████████████████████		
Motocross					
MAXXCROSS MX-SI		████████████████████			
MAXXCROSS MX-IH			████████████████████		
MAXXCROSS SI		████████████████████			
MAXXCROSS IT			████████████████████		
MAXXCROSS Desert IT			████████████████████		

Motocross

MAXXCROSS MXSM

M7328



- Combine with front MAXXCROSS MX-ST (M7332F) which offers balanced on straight line and cornering on sand & mud terrain.
- Stair-shaped scoop design for extreme grip from the gate.
- Prominent half-shoulder knobs for grip during sharp corner.
- Sharp block edges for intense grip and spoon shape on the front side of central knobs and half-shoulder knobs aids in propelling through sand and mud.
- Racing oriented rubber compound delivers superb thermal stability and self-cleaning properties.
- Reinforced sidewall offers proper rider comfort.
- Not for highway service.

TIRE SIZE	LOAD/SPEED RATING	OVERALL DIAMETER (INCH)	SECTION WIDTH (INCH)	RIM SIZE (INCH)	TREAD DEPTH (INCH)
M7328					
100/90-19	57M/TT	26.73	4.84	2.50x19	23/32
110/90-19	62M/TT	27.28	5.12	2.50x19	23/32

MAXXCROSS MXST⁺

M7332F / M7332R



- Racing oriented rubber compound delivers excellent traction and superb stability.
- Unique knobs design provides longer lifespan.
- The uniquely directional spaced tread pattern and knob design give MX-ST superior handling capabilities and offer reliable predictability when cornering.
- Light weight and extra strong construction boot confidence when jumping and improve straight-line braking control.

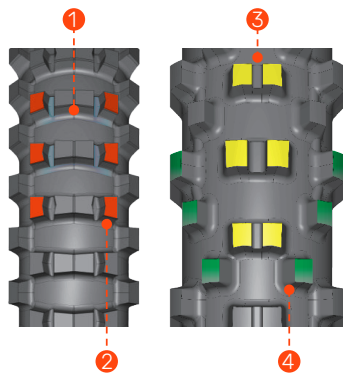
TIRE SIZE	LOAD/SPEED RATING	OVERALL DIAMETER (INCH)	SECTION WIDTH (INCH)	RIM SIZE (INCH)	TREAD DEPTH (INCH)
M7332F Front					
60/100-10	33J/TT	15.04	2.80	1.4X10	11/32
60/100-12	36J/TT	17.05	2.76	1.4X12	12/32
60/100-14	30M/TT	19.06	2.80	1.4X14	12/32
70/100-17	40M/TT	22.87	3.23	1.6X17	14/32
70/100-19	42M/TT	24.76	3.23	1.6X19	14/32
80/100-21	51M/TT	27.80	3.62	1.85X21	16/32
M7332R Rear					
2.75-10	38J/TT	15.51	2.99	1.75X10	11/32
80/100-10	46J/TT	16.50	3.62	1.85X10	12/32
80/100-12	41M/TT	18.50	3.62	1.85X12	16/32
90/100-14	49M/TT	21.73	4.21	2.15X14	18/32
90/100-16	51M/TT	23.70	4.29	2.15X16	18/32
110/100-18	64M/TT	27.36	5.24	2.50X18	21/32
120/100-18	68M/TT	27.48	5.47	2.75X18	21/32
100/90-19	57M/TT	26.54	4.72	2.50X19	21/32
110/90-19	62M/TT	27.40	5.12	2.50X19	21/32
120/80-19	63M/TT	27.13	5.31	2.75X19	21/32



MAXXCROSS MXMH M7325F / M7326R

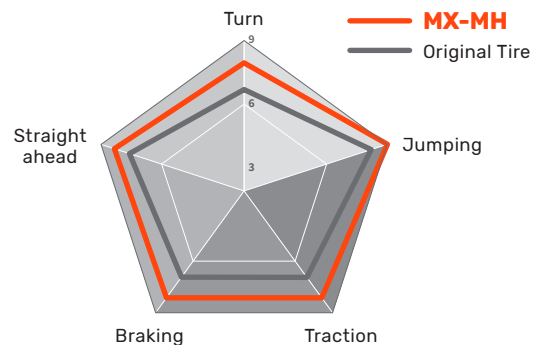
- The front tire with uniquely directional pattern design gives superior handling on mid hard terrain.
- The rear with wedged central knobs and half shoulder knobs offer better stability and enhance tear resistance.

Technical Feature



- 1 Unique V-shape knobs gives outstanding traction.
- 2 Wedged knobs bottom enhance knobs stability and increase durability.
- 3 Spindle shape central knobs arrangement maximize contact grip and straight stability.
- 4 Half shoulder and shoulder block with directional arrangement give superb cornering traction control.

Test Result



TIRE SIZE	LOAD/SPEED RATING	OVERALL DIAMETER (INCH)	SECTION WIDTH (INCH)	RIM SIZE (INCH)	TREAD DEPTH (INCH)
MX-MH Front					
80/100-21	51M/TT	27.80	3.60	1.85X21	15/32
MX-MH Rear					
110/100-18	64M/TT	27.40	5.20	2.50X18	21/32
120/100-18	68M/TT	27.40	5.60	2.75X18	21/32
100/90-19	57M/TT	26.70	4.80	2.50X19	20/32
110/90-19	62M/TT	27.40	5.20	2.50X19	20/32
120/80-19	63M/TT	27.30	5.20	2.75X19	20/32



MAXXCROSS MXSI M7334F / M7334R

- Provide precise performance in intermediate to soft ground condition.
- Racing oriented rubber compound delivers excellent superb stability.
- Reinforce sidewall for rider comfort.
- Not for highway service.

M7334F Front

- Unique knobs design provides longer lifespan.

M7334R Rear

- Unique knobs design with sufficient spacing offers a perfect balance between performance and durability in intermediate to soft ground condition.

TIRE SIZE	LOAD/SPEED RATING	OVERALL DIAMETER (INCH)	SECTION WIDTH (INCH)	RIM SIZE (INCH)	TREAD DEPTH (INCH)
M7334 Front					
70/100-17	40M/TT	22.91	3.23	1.60X17	14/32
80/100-21	51M/TT	27.80	3.66	1.85X21	16/32
M7334 Rear					
90/100-14	49M/TT	21.65	4.25	2.15X14	18/32
110/100-18	64M/TT	27.36	5.20	2.50X18	21/32
110/90-19	62M/TT	27.28	5.16	2.50X19	21/32
120/80-19	63M/TT	27.13	5.31	2.75X19	21/32



MAXXCROSS MXIH M7333F / M7333R

- Provide precise performance in intermediate to hard ground condition.
- Advanced rubber compound delivers excellent superb stability.
- Polygon knobs design promotes grip in intermediate to hard terrain.
- Reinforce sidewall for rider comfort.
- Half-shoulder knobs with stagger grooves in rear provide excellent corner controlling capability.
- Not for highway service.

TIRE SIZE	LOAD/SPEED RATING	OVERALL DIAMETER (INCH)	SECTION WIDTH (INCH)	RIM SIZE (INCH)	TREAD DEPTH (INCH)
M7333F Front					
70/100-19	42M/TT	24.84	3.19	1.60X19	11/32
80/100-21	51M/TT	27.83	3.74	1.85X21	16/32
M7333R Rear					
90/100-16	52M/TT	23.62	4.29	2.15X16	18/32
110/100-18	64M/TT	27.36	5.20	2.50X18	21/32
120/90-18	65R/TT	26.89	4.76	2.75X18	16/32
110/90-19	62M/TT	27.44	5.20	2.50X19	17/32
120/90-19	66M/TT	27.52	5.31	2.75X19	21/32



MAXX CROSS SI

M7311 / M7312

- Stabilizing knobs between the center and side lugs give the tire smooth, controlled transition when entering and exiting corners.
- Unique pattern design with excellent balanced straight line and cornering performance.
- Bridged center knobs providing predictability, control and excellent straight-line traction under acceleration.
- Optimized shoulder knob design giving incredible cornering stability.
- Self-cleaning tread pattern design for soft to intermediate terrain.

TIRE SIZE	LOAD/SPEED RATING	OVERALL DIAMETER (INCH)	SECTION WIDTH (INCH)	RIM SIZE (INCH)	TREAD DEPTH (INCH)
M7311 Front					
2.50-10	33J/TT	15.40	2.95	1.50X10	11/32
60/100-12	36M/TT	17.04	2.91	1.40X12	11/32
60/100-14	30M/TT	19.10	2.91	1.40X14	12/32
70/100-17	40M/TT	23.00	3.27	1.40X17	14/32
70/100-19	42M/TT	24.90	3.30	1.40X19	12/32
80/100-21	51M/TT	27.95	3.82	1.60X21	15/32
90/100-21	51M/TT	28.07	3.89	1.85X21	15/32
M7312 Rear					
2.75-10	38J/TT	15.50	2.99	1.50X10	11/32
80/100-12	41M/TT	18.40	3.66	1.60X12	15/32
90/100-14	49M/TT	21.46	4.13	1.60X14	17/32
90/100-16	52M/TT	23.54	4.25	1.60X16	16/32
100/100-18	59M/TT	26.46	4.72	2.15X18	21/32
110/100-18	64M/TT	27.09	5.00	2.15X18	21/32
120/100-18	68M/TT	27.40	5.20	2.50X18	21/32
100/90-19	57M/TT	26.85	4.72	1.85X19	21/32
110/90-19	62M/TT	27.24	5.00	2.15X19	21/32
120/80-19	63M/TT	27.30	5.12	2.50X19	21/32
120/90-19	66M/TT	28.03	5.31	2.15X19	21/32

MAXX CROSS IT

M7304 / M7305

- A unique knob and groove tread design offers exceptional handling through intermediate condition.
- Advanced rubber compound enhances straight-line traction for maximum control.
- Reinforced sidewall offers excellent stability and torque-wrenching performance.
- Not for highway service.



TIRE SIZE	LOAD/SPEED RATING	OVERALL DIAMETER (INCH)	SECTION WIDTH (INCH)	RIM SIZE (INCH)	TREAD DEPTH (INCH)
M7304 Front					
2.50-10	33J/TT	15.75	2.95	1.50X10	11/32
60/100-14	30M/TT	19.49	3.07	1.40X14	11/32
70/100-17	40M/TT	22.99	3.27	1.40X17	13/32
70/100-19	42M/TT	25.08	3.31	1.60X19	12/32
90/100-20	56M/TT	27.24	3.94	1.85X20	14/32
80/100-21	51M/TT	27.95	3.82	1.60X21	17/32
90/100-21	57M/TT	28.07	3.89	1.85X21	15/32
M7305 Rear					
2.75-10	38J/TT	15.51	2.99	1.50X10	11/32
80/100-12	50M/TT	18.39	3.66	1.60X12	14/32
90/100-14	49M/TT	21.46	4.13	1.60X14	16/32
90/100-16	51M/TT	23.54	4.25	2.15X16	16/32
100/100-17	58M/TT	24.84	4.33	1.85X17	18/32
100/100-18	59M/TT	26.50	4.65	2.50X18	23/32
110/100-18	64M/TT	27.09	5.04	2.50X18	23/32
120/100-18	68M/TT	27.56	5.31	2.75X18	23/32
100/90-19	57M/TT	26.97	4.72	2.50X19	21/32
110/80-19	59M/TT	26.57	5.00	1.85X19	21/32
110/90-19	62M/TT	27.28	5.00	2.50X19	21/32
120/80-19	63M/TT	27.20	5.31	2.15X19	21/32
120/90-19	66M/TT	28.19	5.31	2.75X19	23/32

MAXX IT-DESERT

M7304D / M7305D

- A unique knob and groove tread design offers exceptional handling through off-road condition.
- Advanced rubber compound enhances traction for Desert terrain.
- Reinforced sidewall offers excellent stability and torque-wrenching performance.
- Not for highway service.

TIRE SIZE	LOAD/SPEED RATING	OVERALL DIAMETER (INCH)	SECTION WIDTH (INCH)	RIM SIZE (INCH)	TREAD DEPTH (INCH)
M7304D Front					
80/100-21	51R/TT	27.95	3.82	1.60X21	17/32
90/100-21	57M/TT	28.07	3.89	1.85X21	13/32
M7305D Rear					
110/100-18	64R/TT	27.09	5.04	2.50X18	23/32
120/100-18	68R/TT	27.56	5.31	2.75X18	23/32
100/90-19	57R/TT	26.97	4.72	2.50X19	21/32
110/80-19	59M/TT	26.53	4.92	2.15X19	21/32
110/90-19	62R/TT	27.28	5.00	2.50X19	21/32
120/80-19	63M/TT	27.28	5.16	2.50X19	21/32



Motorcycle

Off-Road Enduro



Enduro

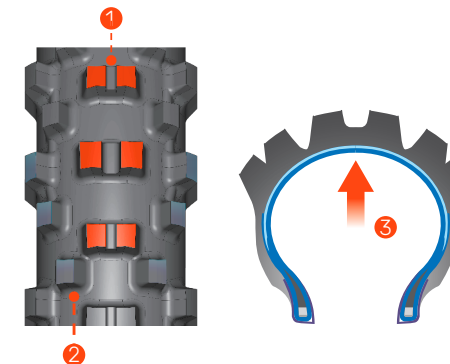
MaxxEnduro

M7325 / M7324



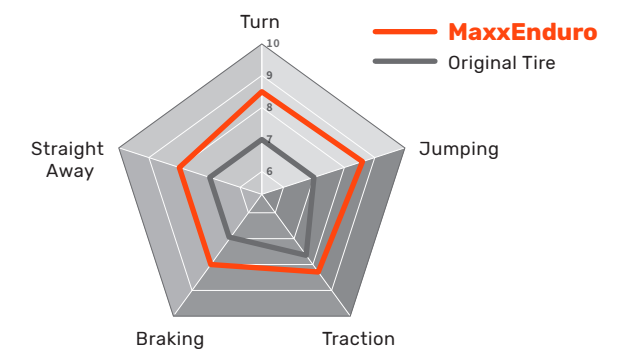
- Racing oriented rubber compound delivers excellent traction, superb stability and longer lifespan.
- Combine with rear M-7324 which offers balanced on straight line and cornering.
- M7325 Front**
 - M7325 enduro features of superior grip and handling directional pattern and with a larger chamber profile and strong construction that increase comfort on extreme condition.
 - DOT and E-mark are approved.
- M7324 Rear**
 - Unique directional knobs and M-shaped groove tread design offer excellent traction, handling and stability for all terrain.
 - Reinforced sidewall offers excellent stability and torque-wrenching performance.
 - DOT and E-mark approved.

Technical Feature



- 1 Spindle shape central knobs arrangement maximize contact grip and straight stability.
- 2 Half shoulder and shoulder block with directional arrangement give superb cornering traction control.
- 3 Larger chamber profile and extra strong construction gives rider more confidence on Hard Enduro condition.

Test Result



Motorcycle Off-Road Enduro

MODEL	Extreme Terrain	Clay / Mud	Hard Terrain
Enduro			
MAXXENDURO (Fr)	MAXXENDURO Soft		
		MAXXENDURO	
MAXXENDURO (Rr)	MAXXENDURO Super Soft		
		MAXXENDURO Soft	
			MAXXENDURO

TIRE SIZE	LOAD/SPEED RATING	OVERALL DIAMETER (INCH)	SECTION WIDTH (INCH)	RIM SIZE (INCH)	TREAD DEPTH (INCH)
M7325 Front					
90/90-21	54R/TT	27.90	3.70	2.15X21	15/32
M7324 Rear					
120/90-18	65R/TT	26.77	4.69	2.75X18	16/32
140/80-18	70R/TT	27.24	5.35	2.75X18	16/32

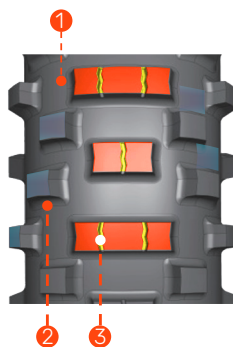


MaxxEnduro **SOFT** **SUPERSOFT**

M7332F / M7324

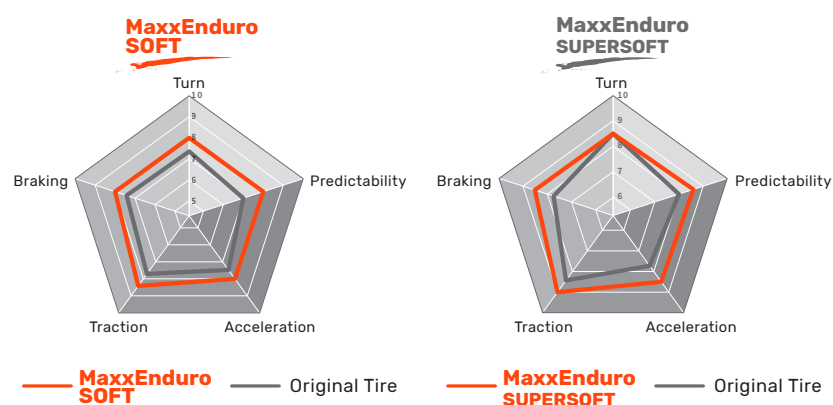
- Special soft & supersoft version for extreme terrain condition complete MaxxEnduro tire range.
- DOT and E-mark are approved.

Technical Feature



- Larger Block De contact grip and knob tear resistance.
- Directional half shoulder knobs arrangement gives precise cornering traction control.
- M-shaped groove provide more grip on mid-hard terrain.

Test Result



TIRE SIZE	LOAD/SPEED RATING	OVERALL DIAMETER (INCH)	SECTION WIDTH (INCH)	RIM SIZE (INCH)	TREAD DEPTH (INCH)
M7332F Front					
90/90-21 (SOFT)	54R/TT	27.68	3.74	2.15X21	16/32
M7324 Rear					
140/80-18 (SOFT)	70R/TT	27.40	5.50	3.50X18	16/32
140/80-18 (SUPERSOFT)	70R/TT	27.50	5.60	3.50X18	16/32

DTR-1

M7302

- Available in a variety of racing compounds:
 - CD3 = soft compound
 - CD5 = medium compound
- Tube-type tire only.
- Not approved for street or highway use.



TIRE SIZE	LOAD/SPEED RATING	OVERALL DIAMETER (INCH)	SECTION WIDTH (INCH)	RIM SIZE (INCH)	TREAD DEPTH (INCH)
M7302					
27.0X7.0-19	4PR(CD3)	27.04	5.31	3.00x19	9/32
27.0X7.0-19	4PR(CD5)	27.04	5.31	3.00x19	9/32
27.5X7.5-19	4PR(CD3)	27.59	6.02	3.50x19	9/32
27.5X7.5-19	4PR(CD5)	27.59	6.02	3.50x19	9/32
120/70-17	58V/TL(CD5)	24.06	4.72	2.75x17	6/32
130/80-19	67H(CD3)	27.04	5.31	3.00x19	9/32
130/80-19	67H(CD5)	27.04	5.31	3.00x19	9/32

TRIALMAXX

M7319 / M7320

- Advanced rubber compound enhances traction for maximum control.
- Special pattern design great for evacuating mud.
- Dual compound with harder rubber for the tread, and softer rubber for the sidewalls.
- Incredible gripping power proven in trial competition.
- Radial-design rear tyre works well for off-road trial riding.



TIRE SIZE	LOAD/SPEED RATING	OVERALL DIAMETER (INCH)	SECTION WIDTH (INCH)	RIM SIZE (INCH)	TREAD DEPTH (INCH)
M7319 Front					
2.75-21	45M/TT	27.83	3.23	1.60X21	11/32
M7320 Rear					
4.00R18	64M/TL	27.20	4.33	2.15X18	16/32

Scooter



*1

Scooter

MODEL	Gravel	Urban	Sport Touring	Sport	Racing
Race					
MA-XR1					=====
S98 PLUS					=====
Sport					
SUPERMAXX SC			=====		
MA-WG2				=====	
S98 SPORT				=====	
MA-R1N				=====	
Urban					
MA-MBA		=====			
MA-CT1		=====			
Standard					
CS-V6					
MA-3D		=====			
Electric Vehicle					
MA-EV		=====			

Race

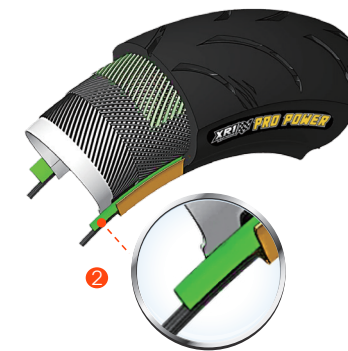
30



MA-XR1

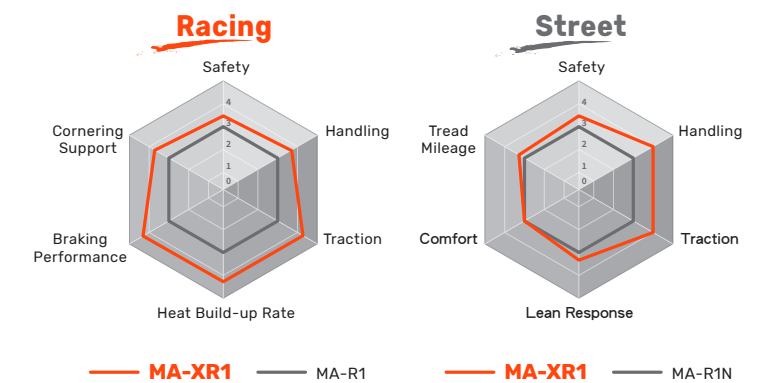
- High-technology pattern design provides excellent dry performance.
- Directional pattern design adds aggressive straight-line and cornering.
- Special tire construction improves stability for high-speed.

Technical Feature



- Special cushion layer design, Aramid material, highest level of heat resistance and strength during high-speed heavy braking into a corner, the vehicle's forward weight shift can withstand greater counterforces
- Elongated High-Rigidity Bead rubber ensures more uniform distribution of sidewall rigidity, providing better support.

Test Result



TIRE SIZE	LOAD/SPEED RATING	OVERALL DIAMETER (INCH)	SECTION WIDTH (INCH)	RIM SIZE (INCH)	TREAD DEPTH (INCH)
MA-XR1 Front					
110/70-12	47L/TL	18.11	4.33	3.00X12	5/32
100/90-12(*)	49J/TL	19.06	3.94	2.50X12	5/32
120/70-13	53P/TL	19.61	4.49	3.00X13	6/32
MA-XR1 Rear					
120/70-12	51L/TL	18.66	4.76	3.50X12	6/32
130/70-12	56L/TL	19.21	5.08	3.50X12	6/32
120/80-12(S)	55J/TL	19.45	4.69	2.75X12	7/32
120/80-12(*)	55J/TL	19.69	4.72	2.75X12	6/32
130/70-13	57P/TL	20.28	5.12	3.50X13	7/32

The (*) symbol indicates that the product is for race condition.

The (*) symbol indicates that the product is for street condition, called MA-XR1S



S98 PLUS

M0098P

- Steering-front tire: Reversed pattern exhibits outstanding braking and provides shorter braking distance.
- Vertical grooves provide excellent traction control on cornering.
- Cross grooves enhance traction when accelerating.
- Lateral grooves design with high land ratio increases cornering grip.
- 3D SIPE: Reduce tread stiffness and realize better contact feeling when braking.

TIRE SIZE	LOAD/SPEED RATING	OVERALL DIAMETER (INCH)	SECTION WIDTH (INCH)	RIM SIZE (INCH)	TREAD DEPTH (INCH)
M0098P					
100/90-12	49J/TL	19.09	3.94	2.50X12	6/32
120/80-12	55J/TL	19.84	4.65	2.75X12	6/32
110/70-13	55L/TL	19.29	4.53	3.00X13	7/32
100/80-14	48L/TL	20.43	3.74	2.50X14	5/32



*1



SUPERMAXX SC

MA-SC

- Mono-spiral steel breaker design improves tire stiffness, provides precise cornering behavior and extraordinary handling stability.
- Full-silica high-grip compound and enhanced structure make excellent dry and wet grip.
- Streamline pattern design and higher sra ratio provide safety in rainy day and wet grip.

MA-SC Front

- New generation compound design provides high mileage, straight stability, extremely grip and traction at the same time.

MA-SC Rear

- New generation dual-compound design provides high mileage, straight stability, extremely grip and traction at the same time.

TIRE SIZE	LOAD/SPEED RATING	OVERALL DIAMETER (INCH)	SECTION WIDTH (INCH)	RIM SIZE (INCH)	TREAD DEPTH (INCH)
MA-SC Front					
120/70R15	56H/TL	21.65	4.76	3.50X15	6/32
120/70R14	55H/TL	20.62	4.68	3.50X14	6/32
MA-SC Rear					
160/60R15	67H/TL	22.63	6.29	4.50X15	8/32
160/60R14	65H/TL	21.61	6.22	4.50X14	8/32
140/70R14	68P/TL	21.73	5.51	3.75X14	8/32



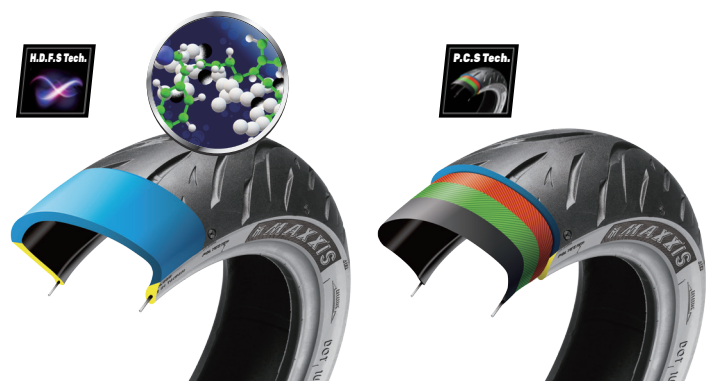
*1

MA-WG2

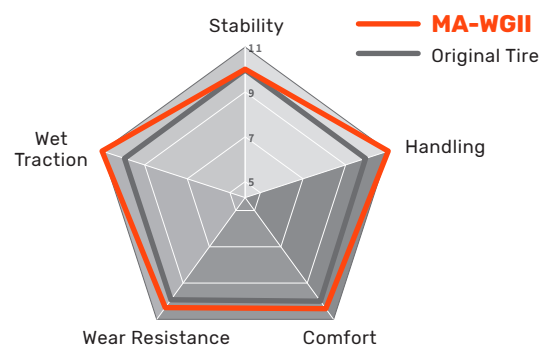


- Tread pattern design retains the central land ratio, which can improve wear mileage. Additionally, the main and secondary groove widths are widened, increasing the sea-to-land ratio, thereby enhancing drainage performance.
- Excellent wet braking performance, rubber compound formula achieves energy-saving effects, and its hydrophilic properties provide grip on slippery roads.
- The rubber compound formula has high stiffness, which can enhance the longitudinal stiffness of the tire, reducing carcass deformation during braking and thereby shortening the braking distance.
- The high-strength cord design with a two-layer diagonal structure provides toughness, getting better support and cornering stability.

Technical Feature



Test Result



TIRE SIZE	LOAD/SPEED RATING	OVERALL DIAMETER (INCH)	SECTION WIDTH (INCH)	RIM SIZE (INCH)	TREAD DEPTH (INCH)
MA-WG Front					
90/90-10	50J/TL	16.46	3.54	2.15 X10	7/32
110/70-12	47P/TL	17.91	4.33	3.00 X12	6/32
90/90-12	54J/TL	18.43	3.54	2.15X12	5/32
100/90-12(*)	59J/TL	19.09	3.98	2.50X12	5/32
110/70-13	48P/TL	19.17	4.37	3.00X13	6/32
120/70-13	53P/TL	19.61	4.72	3.50X13	6/32
MA-WG Rear					
100/90-10	56J/TL	17.09	3.98	2.50X10	8/32
120/70-12	58P/TL	18.70	4.76	3.50X12	8/32
130/70-12	62P/TL	19.37	5.08	3.50X12	8/32
130/70-13	63P/TL	20.20	5.12	3.50 X13	8/32

The (*) symbol indicates that the product is still in the prototype stage.

S98 SPORT

M0098S



- Special tread dual compound formula design provides straight riding with great tread wear, excellent cornering grip and traction.
- Excellent tire section design provides controlling and stability in high speed.
- Streamline tread pattern design and increased groove area exalt safety and wet grip performance in the rainy day.

TIRE SIZE	LOAD/SPEED RATING	OVERALL DIAMETER (INCH)	SECTION WIDTH (INCH)	RIM SIZE (INCH)	TREAD DEPTH (INCH)
M0098S					
90/90-10	55J/TL	16.38	3.54	2.15X10	7/32
100/90-10	61J/TL	17.09	3.98	2.50X10	7/32
110/70-12	53L/TL	18.19	4.25	3.00X12	7/32
120/70-12	58L/TL	18.62	4.72	3.50X12	8/32
130/70-12	62L/TL	19.17	5.08	3.50X12	8/32
120/70-13	53P/TL	19.61	4.49	3.00X13	7/32
130/70-13	57P/TL	20.55	5.35	3.50X13	9/32

MA-R1N



- The racing compound endows optimal traction and stability.
- The sharp groove disperses water quickly and enlarge contact patch for safety.
- Directional tread pattern with deluxe tread compound to fulfill high-level grip for straight and turns.

TIRE SIZE	LOAD/SPEED RATING	OVERALL DIAMETER (INCH)	SECTION WIDTH (INCH)	RIM SIZE (INCH)	TREAD DEPTH (INCH)
MA-R1N Front					
110/70-12	47L/TL	18.23	4.33	2.75X12	6/32
120/70-12	51L/TL	18.50	4.72	3.50X12	6/32
110/70-13	48P/TL	19.13	4.29	3.00X13	6/32
120/70-13	53P/TL	19.76	4.41	2.50X13	6/32
M0098S Rear					
120/70-12	58L/TL	18.58	4.76	3.50X12	7/32
130/70-12	56L/TL	19.06	5.08	3.50X12	7/32
130/70-13	57P/TL	20.39	5.04	3.50X13	7/32

MA-MBA

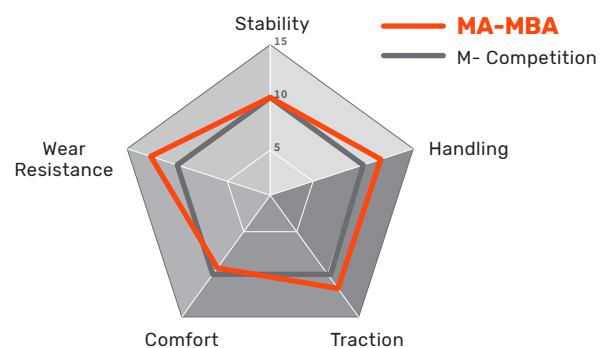


- Snake-like Design: Featuring an asymmetric pattern with wider grooves and a central channel to enhance water drainage. This design maintains the land-to-sea ratio, ensuring tread stiffness and stability without compromising on firmness.
- Groove Side Chamfer Design: Reduces stress concentration, delaying uneven wear and tear.
- Special Reinforced Ply Material: Provides better stability, offering superior performance in terms of stability and handling during riding.

Technical Feature

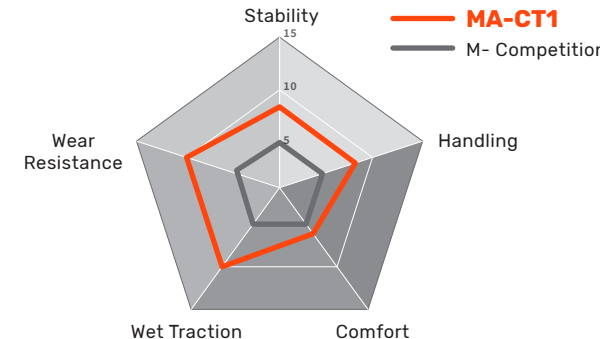


Test Result



Compound Index

Test Result



MACT1



MA-CT1



- Main Groove: Ultra-wide main groove for efficient water drainage, high sea-to-land ratio lateral groove design, and enhanced safety on wet surfaces.
- Directional Pattern:
 - Steering - Front Wheel: The reverse pattern offers better braking power, effectively shortening stopping distances.
 - Driving - Rear Wheel: The forward pattern improves water drainage.
- Central Land Ratio: Enhances dry grip and reduces sliding and wear.
- Special Family SIPE: Inherits the spirit of the S98 family, accelerating warm-up time and improving the fit between the tread and the road surface.
- Double Angle Design: Reducing edge wear and enhancing overall wear resistance.

TIRE SIZE	LOAD/SPEED RATING	OVERALL DIAMETER (INCH)	SECTION WIDTH (INCH)	RIM SIZE (INCH)	TREAD DEPTH (INCH)
MA-MBA Front					
120/70-13	53S/TL	19.61	4.80	3.50X13	6/32
120/70-15	56S/TL	21.65	4.80	3.50X15	6/32
MA-MBA Rear					
130/70-13	63S/TL	20.24	5.04	3.50X13	8/32
140/70-14	68S/TL	21.85	5.47	3.75X14	7/32

TIRE SIZE	LOAD/SPEED RATING	OVERALL DIAMETER (INCH)	SECTION WIDTH (INCH)	RIM SIZE (INCH)	TREAD DEPTH (INCH)
MA-CT1 Front					
100/90-12	59M/TL	19.13	3.98	2.50X12	6/32
110/70-12	53M/TL	18.23	4.33	3.00X12	7/32
120/70-13	53S/TL	19.61	4.76	3.50X13	7/32
100/80-14	48S/TL	20.43	3.94	2.50X14	5/32
MA-CT1 Rear					
110/70-12	53M/TL	18.23	4.33	3.00X12	7/32
120/70-12	58S/TL	18.58	4.76	3.50X12	8/32
130/70-12	62S/TL	19.21	5.08	3.50X12	8/32
110/70-13	54S/TL	19.13	4.25	3.00X13	8/32
130/70-13	63S/TL	20.24	5.12	3.50X13	8/32

CS-V6



- The optimization angle design of central S groove provides orientation and better traction.
- The average void ratio design enhances cornering grip.
- The high land ratio design increases tire's contact area available and enhances cornering grip.
- The design of tiny groove reduces stress.

TIRE SIZE	LOAD/SPEED RATING	OVERALL DIAMETER (INCH)	SECTION WIDTH (INCH)	RIM SIZE (INCH)	TREAD DEPTH (INCH)
CS-V6					
3.50-10	51J/TL	17.20	3.62	2.50X10	7/32
90/90-10	50J/TL	16.50	3.54	2.15X10	7/32
100/90-10	56J/TL	17.13	3.98	2.50X10	7/32
110/70-12	47L/TL	18.11	4.33	3.00X12	7/32
120/70-12	51L/TL	18.62	4.76	3.50X12	7/32
130/70-12	56L/TL	19.21	5.08	3.50X12	8/32

MA-3D



- The optimal Diamond design pattern, enhances wet grip and cornering traction.
- A directional tread pattern enhances both wet and rain condition.
- Absorbing shock and vibration of tire, protect the rim and comfortable For rider.

TIRE SIZE	LOAD/SPEED RATING	OVERALL DIAMETER (INCH)	SECTION WIDTH (INCH)	RIM SIZE (INCH)	TREAD DEPTH (INCH)
MA-3D					
3.50-10	51J/TL	17.20	3.62	2.50X10	7/32
90/90-10	50J/TL	16.38	3.54	2.15X10	7/32
100/90-10	56J/TL	17.08	3.97	2.50X10	7/32
90/90-12	44J/TL	18.38	3.54	2.15X12	6/32
110/70-12	47L/TL	18.03	4.33	3.00X12	7/32
120/70-12	51L/TL	18.62	4.80	3.50X12	7/32
130/70-12	56L/TL	19.17	5.08	3.50X12	8/32
70/90-14	34P/TL	18.97	2.71	1.6X14	6/32
80/90-14	40P/TL	19.68	3.15	1.85X14	7/32
90/90-14	46P/TL	20.39	3.54	2.15X14	7/32
100/90-14	51P/TL	21.10	3.97	2.50X14	7/32
70/90-16	36P/TL	21.02	2.71	1.60X16	6/32
80/90-16	43P/TL	21.77	3.15	1.85X16	7/32
90/90-16	48P/TL	22.36	3.54	2.50X16	7/32
2.00-17	22J/TT	21.33	2.08	1.2X17	4/32
2.25-17	33L/TT	21.89	2.36	1.50X17	4/32
2.50-17	38L/TT	22.36	2.52	1.50X17	7/32
2.50-17	43L/TT	22.28	2.44	1.60X17	7/32
2.75-17	47L/TT	23.15	2.95	1.85X17	7/32
70/90-17	38P/TL	21.97	2.72	1.60X17	6/32
80/90-17	44P/TL	22.68	3.15	1.85X17	7/32
90/80-17	46P/TL	22.83	3.54	2.15X17	7/32
100/70-17	49P/TL	22.52	3.93	2.75X17	7/32
110/70-17	54P/TL	23.07	4.33	3.00X17	7/32
2.50-18	45P/TT	23.30	2.64	1.60X18	7/32
2.75-18	48P/TT	24.10	3.07	1.85X18	7/32

MA-EV



- The major pattern of S type joint with the minor pattern by cross grooves enhances the ability of drain and increase wet grip.
- Lateral grooves design with high void ratio disperses water quickly and increases cornering grip.
- Directional center pattern designs decrease rolling resistance.

MA-EV Front

- Reversed pattern design provides better braking.

MA-EV Rear

- 3D SIPE: Reduce tread stiffness and realize better contact feeling when braking.

TIRE SIZE	LOAD/SPEED RATING	OVERALL DIAMETER (INCH)	SECTION WIDTH (INCH)	RIM SIZE (INCH)	TREAD DEPTH (INCH)
MA-EV Front					
90/90-10	50J/TL	16.38	3.54	2.15X10	7/32
90/90-12	54L/TL	18.39	3.43	2.15X12	5/32
100/90-12	59M/TL	19.09	3.98	2.50X12	6/32
110/70-13	55L/TL	19.06	4.13	3.00X13	8/32
100/80-14	48L/TL	20.47	3.74	2.50X14	5/32
MA-EV Rear					
100/90-10	56J/TL	17.09	3.98	2.50X10	8/32
110/90-10	61L/TL	17.99	4.37	2.50X10	6/32
110/70-12	53M/TL	18.11	4.33	3.00X12	7/32
110/70-13	55L/TL	19.06	4.13	3.00X13	7/32
130/70-13	63P/TL	20.16	5.08	3.50X13	8/32



© *1 Picture Provided by: 2 Wheels